

COMPACT EXCAVATOR

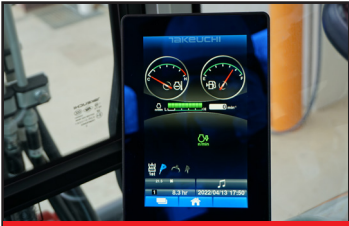
TB335R

TAKEUCHITM
From World First to World Leader

 **DURANTE**
RENTALS[®]
LOCAL. EQUIPMENT. RENTAL.



TOUGH, POWERFUL, RELIABLE



7" Touch Screen Display (CAB)



Intuitive Operation



Hydraulic Joystick Controls



Large Floor with Foot Rest

The latest 300 series excavator, the TB335R features a minimal tail swing design that allows you to focus more on the work you are performing and worry less about rear swing impacts. Operators will find that the compact radius of the TB335R will provide excellent maneuverability and accessibility to confined worksites without sacrificing stability. While powerful bucket and arm crowd forces and a wide working range will deliver unmatched performance.

A comfortable operator is a productive operator and the TB335R features a wide range of improvements that will enhance the operator's experience. Features include a fully redesigned interior that includes one touch controls, jog dial, high-definition color

monitor, and a deluxe high back suspension seat that has fore/aft/tilt and multiple height adjustments. Low effort hydraulic pilot controls serve as an extension of the operator delivering precise operation while minimizing fatigue. The cabin interior is inviting and spacious allowing the operator to remain comfortable and productive throughout the day.

Daily inspections and maintenance are easy to carry out thanks in part to a swing out engine hood and overhead opening right side cover. With the hoods open, the operator can quickly inspect the water separator, radiator and oil cooler, hydraulic oil level sight gauge, fuel level, dual element air cleaners, coolant level, engine oil dipstick, and battery.



Completely Redesigned with Intuitive Jog Dial and Touch Pad Operation

Product Features & Specifications

ENGINE

- U.S. EPA Final Tier 4 / EU Stage 5
- Automatic Fuel Priming System
- Double Element Air Filter
- Automatic Idle
- Working Modes: Standard and ECO
- Engine Preheat Starting Aid
- High Capacity Radiator and Hydraulic Oil Cooler
- High Capacity Fuel Filters
- Engine Safe Start System
- Engine Auto Stop

UNDERCARRIAGE AND FRAME

- Triple Flanged Track Rollers
- 2-Speed Axial Piston Travel Motors
- Integrated Load Sensing Automatic Shift Down
- Sloped Frame with Open Centers
- Large Wrap Around Counterweight
- 11.8" Rubber Tracks
- Heavy Duty Backfill Blade with Float

ELECTRICAL

- 4.3" High Definition Multifunction LCD Color Monitor (Canopy)
- 7" Multifunction Touchscreen Color Monitor (Cab)
- Jog Dial with Multifunction Panel
- LED Light Package Including Boom Light and Cab Mounted Lights
- Travel Alarm
- Beacon Socket and Lamp Switch (Cab Only)

TAKEUCHI FLEET MANAGEMENT

- 2 Year Standard Service
- Minimize Downtime
- Remote Diagnostics
- Utilization Tracking
- Proactive Maintenance
- Control Costs

OPERATOR'S STATION

- ROPS/TOPS/OPG (TOP Guard, Level I)
- Deluxe High Back Suspension Seat with Head Rest
- 2" Retractable Seat Belt
- 12V Power Outlet
- Cab with Air Conditioner, Heat, Defrost, Windshield Wiper and Washer, Skylight with Sunshade, AM/FM Radio with Bluetooth

HYDRAULIC AND WORKING EQUIPMENT

- Variable Displacement, Open Center Hydraulics
- Cushioned Boom and Swing Cylinders
- Hydraulic Pilot Controls
- Proportional Control for Primary Auxiliary Circuit with Detent
- 3rd Auxiliary Circuit for Quick Hitch (Cab Only)
- Primary Auxiliary Hydraulic Circuit Plumbed to Arm
- Multiple Attachment Presets
- Flow Selector Valve, Primary Auxiliary Circuit
- Pattern Change Valve (ISO or SAE)
- Pilot Accumulator
- Main Boom Cylinder Guard
- Long Arm with Integrated Thumb Mount
- Dual Pin Position Bucket (optional)
- Mechanical Bucket Quick Coupler (optional)
- Main Pin Hydraulic Thumb (optional)



Easy Service Access with Wide-Opening Hoods



Short Tail Swing

*Functions may not be available in all countries, so please consult your Takeuchi dealer for details.

OPERATING PERFORMANCE

Operating Weight - Canopy	7,970 lb	(3,615 kg)
Operating Weight - Cab	8,310 lb	(3,770 kg)
Maximum Bucket Breakout	9,172 lbf	(4,160 kgf)
Maximum Arm Crowd Force	4,290 lbf	(1,946 kgf)
Arm Length	4' 7.6"	(1,410mm)
Slew Speed	9.0 rpm	
Traction Force	9,105 lbf	(4,130 kgf)
Ground Pressure - Canopy	4.5 psi	(30.9 kPa)
Ground Pressure - Cab	4.7 psi	(32.2 kPa)
Max Travel Speed		
Low Range	1.9 mph	(3.0 km/h)
High Range	2.5 mph	(4.1 km/h)

HYDRAULIC SYSTEM

Total Hydraulic Flow	31 gpm	(117 L/min)
Auxiliary Flow - Primary Circuit	17.0 gpm	(64.4 L/min)
Hydraulic System Pressure	3,550 psi	(24.5 Mpa)
Auxiliary 1 Pressure	3,050 psi	(21.0 Mpa)

ENGINE

Make/Model	Kubota V1505-E4B
Displacement	91.4 cu in (1.5 L)
Horsepower @ 2,300 rpm	24.4 hp (18.2 kW)
Maximum Torque @ 1,700 rpm	70.6 lbf (95.8 Nm)

FLUID CAPACITIES

Engine Lubrication	7.1 qt	(6.7 L)
Cooling System	3.3 gal	(12.5 L)
Fuel Tank	11.5 gal	(43.5 L)
Hydraulic Reservoir	7.5 gal	(28.4 L)
Hydraulic System	15.6 gal	(59.0 L)



Up to 4 Service Ports (Optional)



Great Stability



All Steel Construction

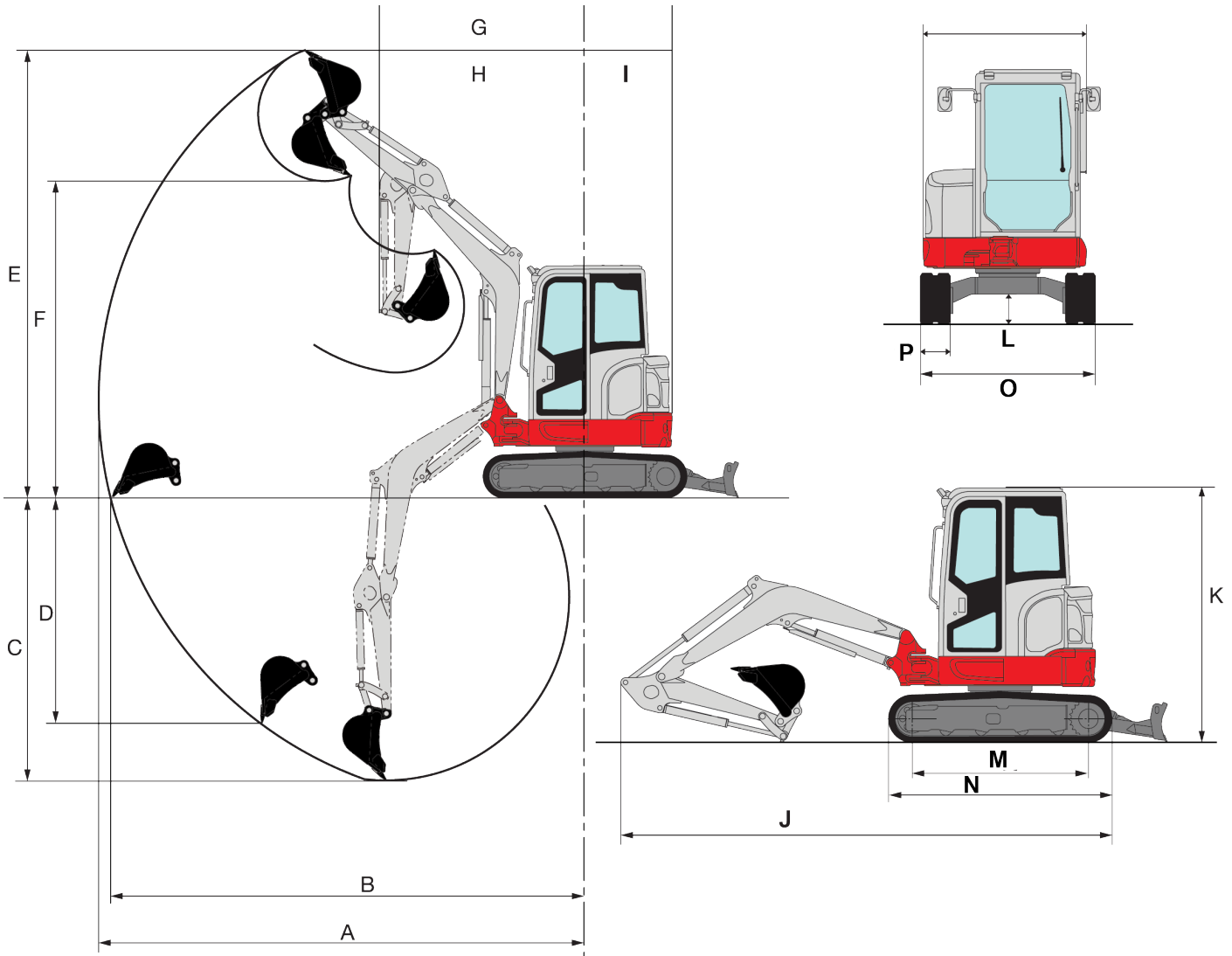


Takeuchi Fleet Management

ATTACHMENTS

Takeuchi now offers attachments for all your Takeuchi equipment. See your authorized Takeuchi dealer for additional information and attachment options.

TB335R Compact Excavator



MACHINE DIMENSIONS

A	Maximum Reach	17 ft 9.7 in	(5,430 mm)
B	Maximum Reach at Ground Level	17 ft 4.8 in	(5,305 mm)
C	Maximum Digging Depth	10 ft 6.2 in	(3,205 mm)
D	Maximum Vertical Digging Depth	8 ft 2.6 in	(2,505 mm)
E	Maximum Height of Cutting Edge	16 ft 2.6 in	(4,945 mm)
F	Maximum Dumping Height	11 ft 7.0 in	(3,531 mm)
G	Front Swing Radius	7 ft 5.2 in	(2,265 mm)
H	Front Swing Radius with Boom Offset	6 ft 1.2 in	(1,860 mm)
I	Tailswing Radius	3 ft 1.4 in	(950 mm)
J	Transport Length	17 ft 10.2 in	(5,440 mm)
K	Transport Height	8 ft 3.2 in	(2,520 mm)
L	Ground Clearance	11.6 in	(295 mm)
M	Crawler Base	5 ft 8.9 in	(1,750 mm)
N	Undercarriage Length	7 ft 3.2 in	(2,215 mm)
O	Undercarriage Width	5 ft 8.5 in	(1,740 mm)
P	Track Width (Rubber)	11.8 in	(300 mm)



© 2022 Takeuchi MFG. Co., Ltd. All Rights Reserved. In accordance with our established policy of continued improvement, specifications and features are subject to change without notice. Pictures may show options other than standard equipment.

FORM: TB335R Compact Excavator Spec Sheet - Oct. 2022

TAKEUCHI[™]
From World First to World Leader